

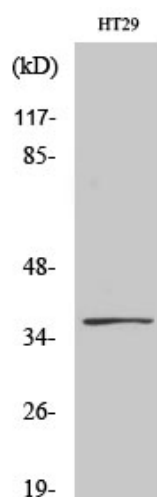


GPR171 Polyclonal Antibody

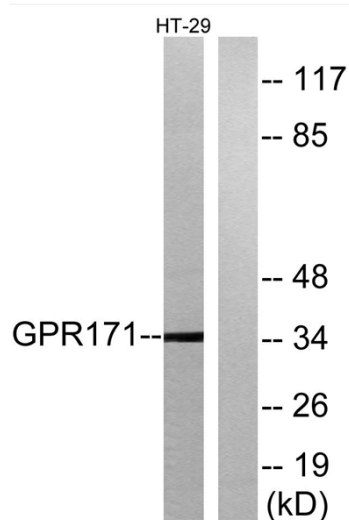
Catalog No	YP-Ab-13316
Isotype	IgG
Reactivity	Human;Rat;Mouse;
Applications	WB;IF;ELISA
Gene Name	GPR171
Protein Name	Probable G-protein coupled receptor 171
Immunogen	The antiserum was produced against synthesized peptide derived from human GPR171. AA range:181-230
Specificity	GPR171 Polyclonal Antibody detects endogenous levels of GPR171 protein.
Formulation	Liquid in PBS containing 50% glycerol, 0.5% BSA and 0.02% sodium azide.
Source	Polyclonal, Rabbit,IgG
Purification	The antibody was affinity-purified from rabbit antiserum by affinity-chromatography using epitope-specific immunogen.
Dilution	Western Blot: 1/500 - 1/2000. Immunofluorescence: 1/200 - 1/1000. ELISA: 1/10000. Not yet tested in other applications.
Concentration	1 mg/ml
Purity	≥90%
Storage Stability	-20°C/1 year
Synonyms	GPR171; H963; Probable G-protein coupled receptor 171; G-protein coupled receptor H963
Observed Band	36kD
Cell Pathway	Cell membrane ; Multi-pass membrane protein . Colocalized with GPR83 in the paraventricular nucleus. .
Tissue Specificity	Expressed in both T-cell subsets and natural killer cells, while it is undetectable in B cells or CD14(+) monocytes. Expressed in peripheral blood mononuclear cells (PBMC) and Jurkat cells (at protein level).
Function	function:Orphan receptor.,similarity:Belongs to the G-protein coupled receptor 1 family.,
Background	function:Orphan receptor.,similarity:Belongs to the G-protein coupled receptor 1 family.,
matters needing attention	Avoid repeated freezing and thawing!
Usage suggestions	This product can be used in immunological reaction related experiments. For more information, please consult technical personnel.



Products Images



Western Blot analysis of various cells using GPR171 Polyclonal Antibody



Western blot analysis of lysates from HT-29 cells, using GPR171 Antibody. The lane on the right is blocked with the synthesized peptide.